



GaN HEMT 28V, 20W, General purpose RF Power Transistor

Description

The XTAH58020C6 is a 20W GaN HEMT, designed for multiple applications, up to 6GHz.

The transistor is available in a highly cost effective 10*6mm, surface mount, QFN package with 100% DC production test to ensure the quality and consistency.

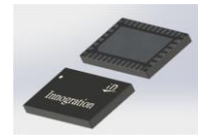
It can be used in CW, Pulse and any other modulation modes.

There is no guarantee of performance when this part is used in applications designed Outside of these frequencies.

- Typical broadband performance with device soldered

VDS = 28V, IDQ = 10mA, VGS=-2.6V.

XTAH58020C6



Freq (MHz)	P1dB (dBm)	P1dB (W)	P1dB Eff(%)	P1dB Gain(dB)	P3dB (dBm)	P3dB (W)	P3dB Eff(%)
1000	43.35	21.6	61.3	14.76	44.31	27.0	66.8
1500	42.03	16.0	62.5	14.93	43.07	20.3	66.2
2000	42.87	19.3	49.7	11.76	44	25.1	55.0
2500	42.56	18.0	51.2	14.43	43.7	23.4	55.3
3000	42.45	17.6	43.5	12.18	44.09	25.6	49.8
3500	42.58	18.1	40.4	10.11	44.25	26.6	45.6
4000	42.76	18.9	44.4	11.79	44.12	25.8	48.4
4500	42.55	18.0	45.7	10.9	43.85	24.3	50.4
5000	42.54	18.0	43.7	11.65	43.56	22.7	46.2
5500	41.31	13.5	37.3	14.04	43.38	21.8	45.1
6000	40.26	10.6	37.1	12.25	42.68	18.5	45.2

Applications

- S band power amplifier
- L band power amplifier
- C band power amplifier
- ISM/RF Energy power amplifier

Important Note: Proper Biasing Sequence for GaN HEMT Transistors

Turning the device ON

1. Set VGS to the pinch-off (VP) voltage, typically -5 V
2. Turn on VDS to nominal supply voltage
3. Increase VGS until IDS current is attained
4. Apply RF input power to desired level

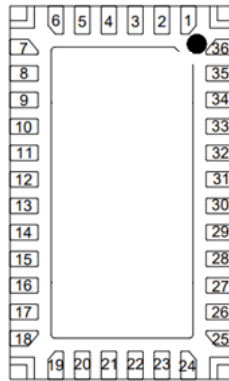
Turning the device OFF

1. Turn RF power off
2. Reduce VGS down to VP, typically -5 V
3. Reduce VDS down to 0 V
4. Turn off VGS



Figure 1: Pin Connection definition

Transparent top view (Backside grounding for source)



Pin No.	Symbol	Description
8,9,10,11,14,15,16,17	RF IN/Vgs	RF Input, Vgs bias
26,27,28,29,32,33,34,35	RF OUT/VDD	RFOutput, Drain bias
Rest Pins and Package Base	GND	DC/RF Ground. Must be soldered directly to heatsink or copper coin for CW application.

Table 1. Maximum Ratings

Rating	Symbol	Value	Unit
Drain--Source Voltage	V_{DSS}	+150	Vdc
Gate--Source Voltage	V_{GS}	-8 to +0.5	Vdc
Operating Voltage	V_{DD}	36	Vdc
Maximum gate current	I_{gs}	5	mA
Storage Temperature Range	T_{stg}	-65 to +150	°C
Case Operating Temperature	T_c	+150	°C
Operating Junction Temperature	T_j	+225	°C

Table 2. Thermal Characteristics

Characteristic	Symbol	Value	Unit
Thermal Resistance, Junction to Case by FEA $T_c=85^\circ\text{C}$, at $P_{diss}=20\text{W}$	$R_{\theta JC}$	4	°C /W

Table 3. Electrical Characteristics (TA = 25°C unless otherwise noted)

DC Characteristics (main path, measured on wafer prior to packaging)

Characteristic	Conditions	Symbol	Min	Typ	Max	Unit
Drain-Source Breakdown Voltage	$V_{GS}=-8\text{V}$; $I_{DS}=5\text{mA}$	V_{DSS}		200		V
Gate Threshold Voltage	$V_{DS}=10\text{V}$, $I_D=5\text{mA}$	$V_{GS(th)}$	-4		-2	V
Gate Quiescent Voltage	$V_{DS}=28\text{V}$, $I_{DS}=10\text{mA}$, Measured in Functional Test	$V_{GS(Q)}$		-2.6		V

Ruggedness Characteristics

Characteristic	Conditions	Symbol	Min	Typ	Max	Unit
Load mismatch capability	6GHz, $P_{out}=20\text{W}$ Pulsed CW All phase, No device damages	VSWR		10:1		

Typical performance

Figure 4: Network analyzer output S11/S21

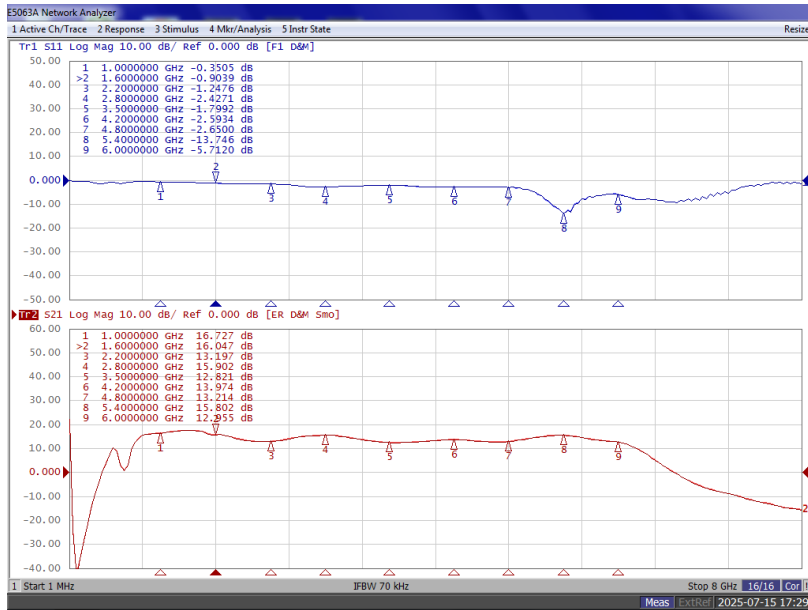


Figure 5: Picture of application board

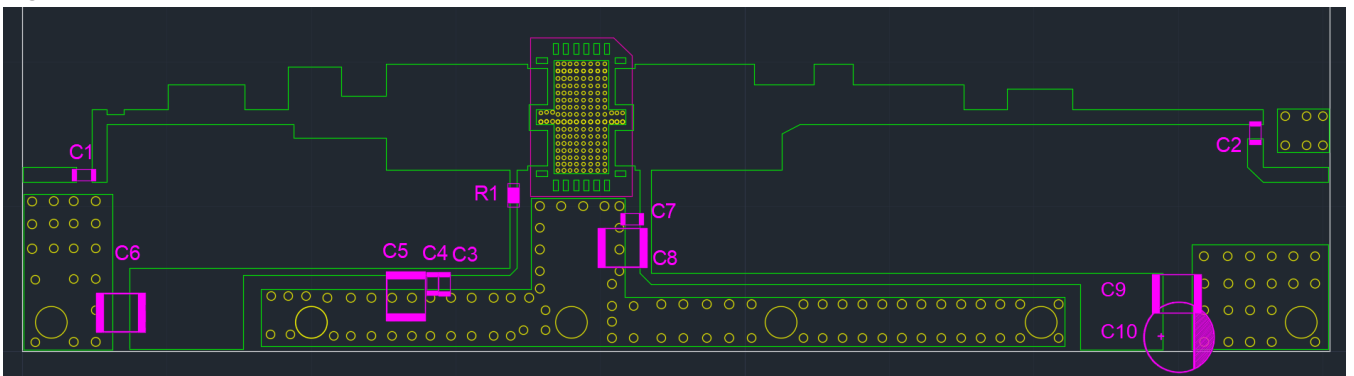
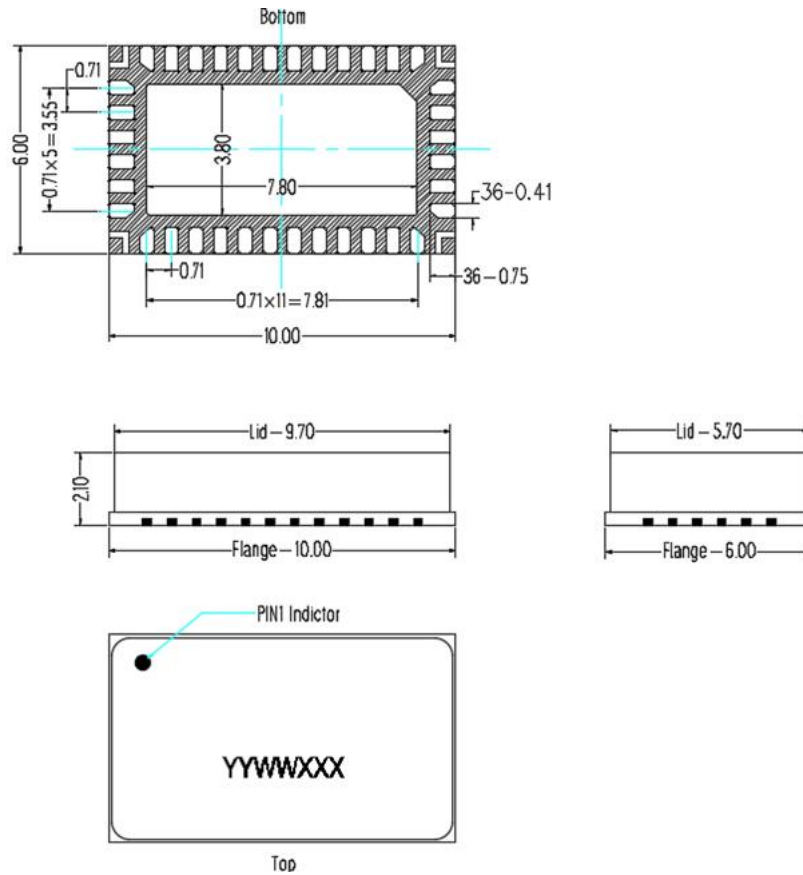


Table 4. Bill of materials of application board (PCB layout upon request, RO4350B 20mils)

Reference	Footprint	Value	Quantity
C1,C2	0603	3.9 pF	2
C3,C7	0603	100 pF	2
C4	0603	10 nF	1
C5,C6,C8,C9	1210	10 uF/63V	4
C10	\	470 uF/63V	1
R1	0603	10 ohm	1
U1	C6	XTAH58020C6	1



10*6 Plastic Package



Notes:

1. All dimensions are in mm;
2. The tolerances unless specified are ± 0.2 mm.

Revision history

Table 4. Document revision history

Date	Revision	Datasheet Status
2025/7/15	V1.0	Preliminary Datasheet Creation

Application data based on: CWZ-25-09

Notice

Specifications are subject to change without notice. Innogrations believes the information within the data sheet to be reliable. Innogrations makes no warranty, representation or guarantee regarding the suitability of its products for any particular purpose.

“Typical” parameter is the average values expected by Innogrations in quantities and are provided for information purposes only. It can and do vary in different applications and related performance can vary over time. All parameters should be validated by customer’s technical experts for each application.

Innogrations products are not designed, intended or authorized for use as components in applications intended for surgical implant into the body or to support or sustain life, in applications in which the failure of the Innogrations product could result in personal injury or death or in applications for planning, construction, maintenance or direct operation of a nuclear facility.

For any concerns or questions related to terms or conditions, please check with Innogrations and authorized distributors

Copyright © by Innogrations (Suzhou) Co.,Ltd.