



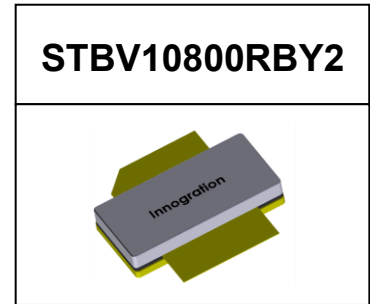
915MHz ,700W, RF Power GaN HEMT

Description

The STBV10800RBY2 is a 700-watt, prematched GaN HEMT, designed for multiple applications with frequencies at 915MHz.

It can support both CW and pulse operation or any other linear applications

There is no guarantee of performance when this part is used in applications designed Outside of these frequencies.



•Typical Performance (On Innogrations fixture with device soldered):

$V_{DD} = 50$ Volts, $V_{GS} = -4.8$ V

Freq (MHz)	P1dB (dBm)	P1dB (W)	P1dB Eff (%)	P1dB Gain (dB)	P3dB (dBm)	P3dB (W)	P3dB Eff (%)
915	58.43	696.0	78.9	18.92	58.94	782.8	81.9

Applications and Features

- Multiple 915MHz RF Energy applications
 - Commercial microwave oven
 - Industry heating
- P band power amplifier
- L band , avionics power amplifier
- Thermally Enhanced Industry Standard Package
- High Reliability Metallization Process
- Excellent thermal Stability and Excellent Ruggedness
- Compliant to Restriction of Hazardous Substances (RoHS) Directive 2002/95/EC

Important Note: Proper Biasing Sequence for GaN HEMT Transistors

Turning the device ON

1. Set VGS to the pinch--off (VP) voltage, typically -5 V
2. Turn on VDS to nominal supply voltage
3. Increase VGS until IDS current is attained
4. Apply RF input power to desired level

Turning the device OFF

1. Turn RF power off
2. Reduce VGS down to VP, typically -5 V
3. Reduce VDS down to 0 V
4. Turn off VGS

Table 1. Maximum Ratings

Rating	Symbol	Value	Unit
Drain--Source Voltage	V_{DSS}	+200	Vdc
Gate--Source Voltage	V_{GS}	-10 to +0.5	Vdc
Operating Voltage	V_{DD}	55	Vdc
Storage Temperature Range	Tstg	-65 to +150	°C
Case Operating Temperature	T_C	+150	°C
Operating Junction Temperature	T_J	+225	°C



Table 2. Thermal Characteristics

Characteristic	Symbol	Value	Unit
Thermal Resistance by Finite Element Analysis, Channel-to-Case ,Case Temperature 25°C, P _D = 180W (For reliability estimation)	R _{θCHC} (FEA)	0.23	°C /W

Table 3. Electrical Characteristics (TA = 25°C unless otherwise noted)

DC Characteristics

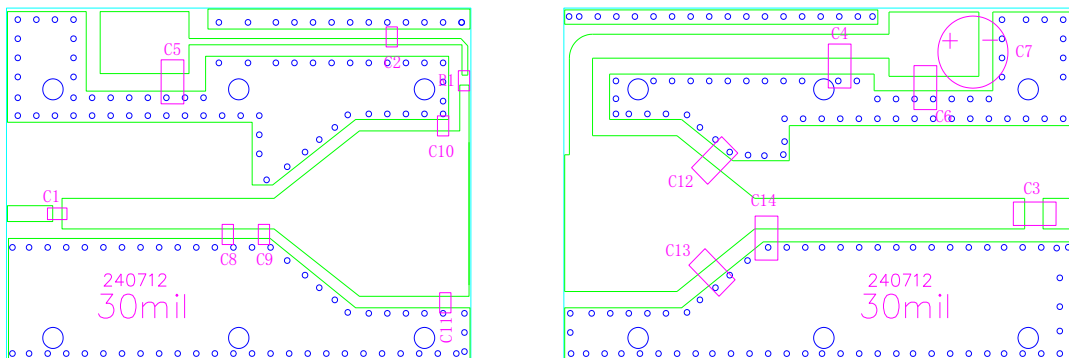
Characteristic	Conditions	Symbol	Min	Typ	Max	Unit
Drain-Source Breakdown Voltage	V _{GS} =-8V; I _{DS} =120mA	V _{DSS}		200		V
Gate Threshold Voltage	V _{DS} =10V, I _D = 120mA	V _{GS(th)}		-3.7		V
Gate Quiescent Voltage	V _{DS} =50V, I _{DS} =250mA, Measured in Functional Test	V _{GS(Q)}		-3.45		V

Functional Tests (In Innegration Test Fixture, 50 ohm system) : V_{DD} = 50 Vdc, V_{GS}=-4.8V, f = 915MHz, Pulsed CW 20us/10%

Characteristic	Symbol	Min	Typ	Max	Unit
Power Gain @ P2dB	G _p		17		dB
2dB Compression Point	P2dB		700	800	W
Drain Efficiency@P3dB	η _D		80		%
Input Return Loss	IRL	-3	-5		dB

Reference Circuit of Test Fixture Assembly Diagram

PCB materials: **Roger 4350B**,30mils, DXF file upon request



Designator	Footprint	Comment	Quantity
C1	0603/0805	4.7pF	1
C2	0603/0805	47pF	1
C3, C4	1210	47pF	2
C5, C6	1210	10 uF/100V	2
C7		1000 uF/63V	1
C8, C9	0603/0805	3.0 pF	2
C10, C11	0603/0805	10 pF	2
C12	1210	10 pF	1
C13	1210	8.2 pF	1
C14	1210	6.8 pF	1
R1	0603	10 Ω	1



TYPICAL CHARACTERISTICS

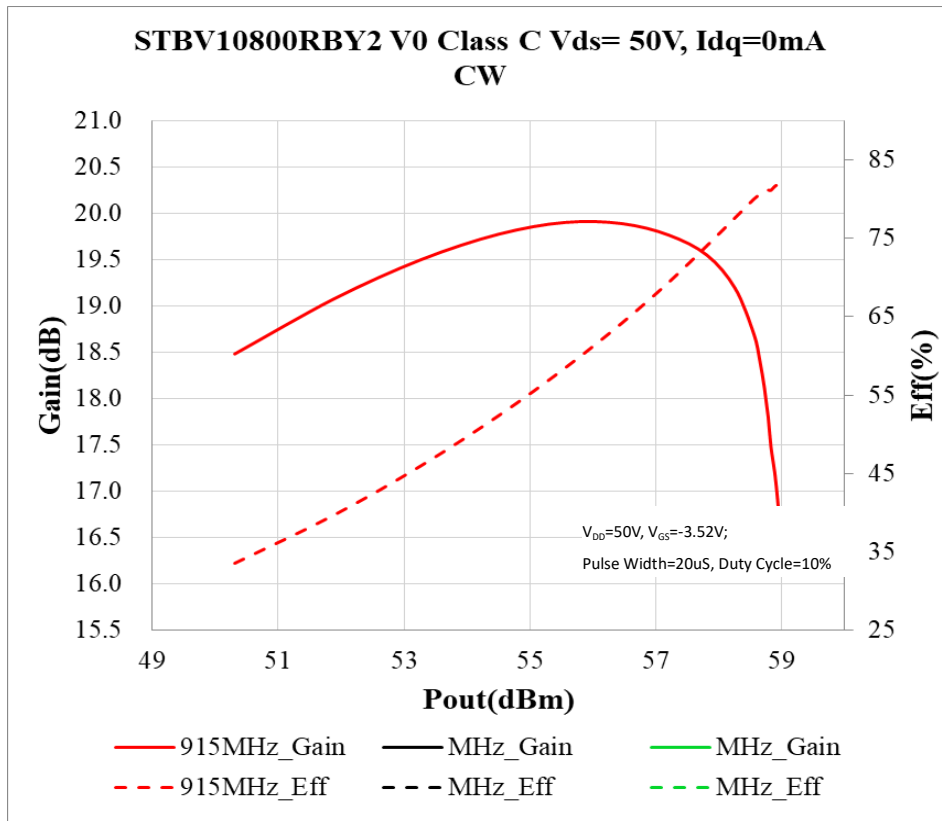


Figure 1. Power gain and drain efficiency as function of CW output power

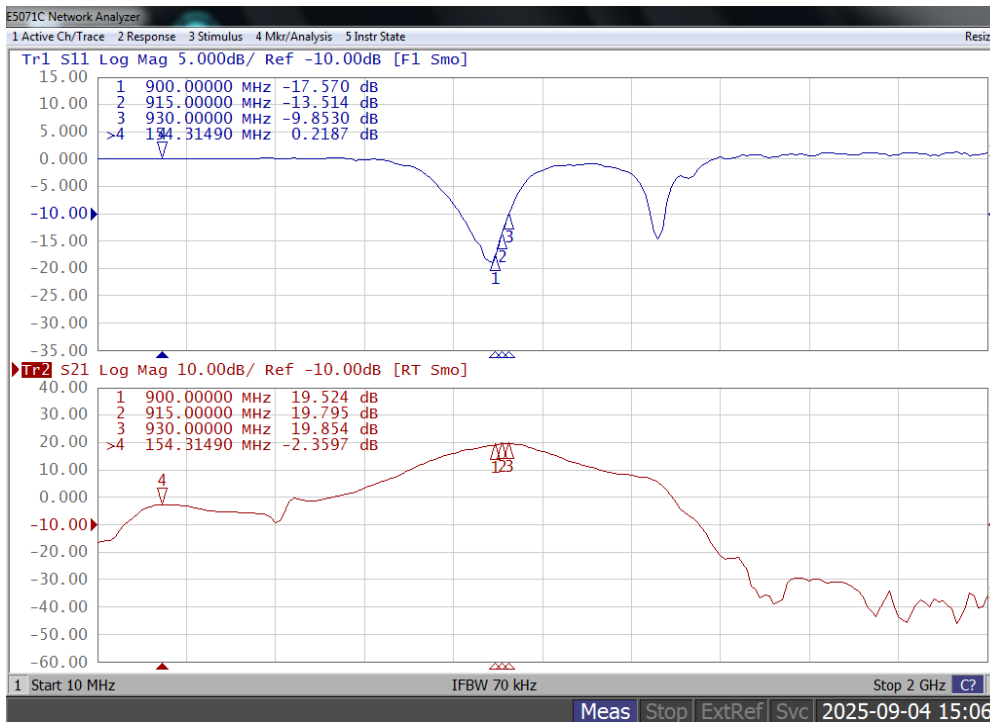
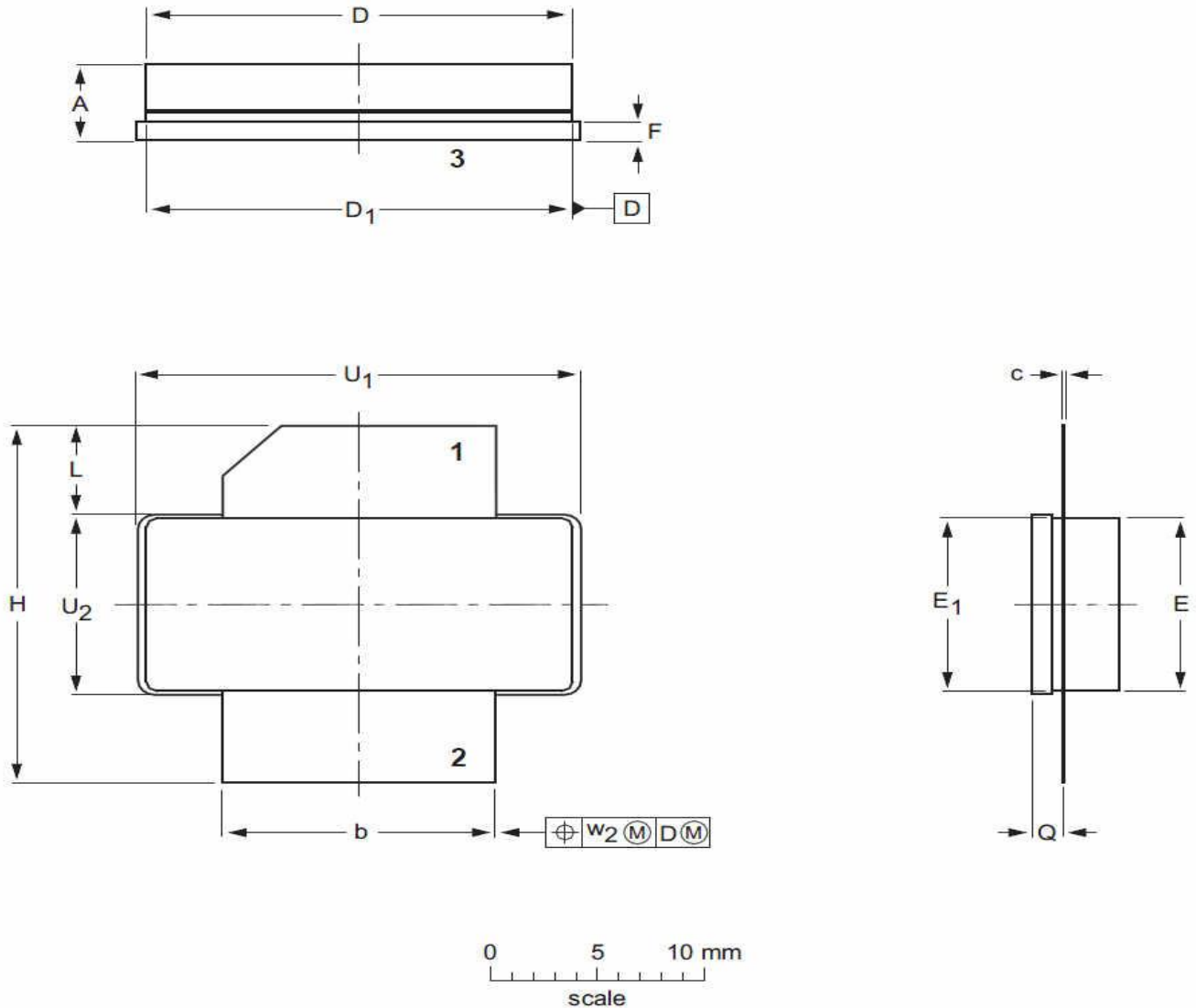


Figure 2. Network analyzer output S11/S21



Package Outline

Earless flanged ceramic package; 2 leads (1—DRAIN、2—GATE、3—SOURCE)



UNIT	A	b	c	D	D ₁	E	E ₁	F	H	L	Q	U ₁	U ₂	W ₂
mm	4.72	12.83	0.15	20.02	19.96	9.50	9.53	1.14	19.94	5.33	1.70	20.70	9.91	0.25
	3.43	12.57	0.08	19.61	19.66	9.30	9.25	0.89	18.92	4.32	1.45	20.45	9.65	
inches	0.186	0.505	0.006	0.788	0.786	0.374	0.375	0.045	0.785	0.210	0.067	0.815	0.390	0.010
	0.135	0.495	0.003	0.772	0.774	0.366	0.364	0.035	0.745	0.170	0.057	0.805	0.380	

OUTLINE VERSION	REFERENCE			EUROPEAN PROJECTION	ISSUE DATE
	IEC	JEDEC	JEITA		
PKG-B2					03/12/2013



Revision history

Table 4. Document revision history

Date	Revision	Datasheet Status
2025/9/8	V1.0	Preliminary Datasheet Creation

Application data based on LSM-25-27

Notice

Specifications are subject to change without notice. Innogrations believes the information within the data sheet to be reliable. Innogrations makes no warranty, representation or guarantee regarding the suitability of its products for any particular purpose.

“Typical” parameter is the average values expected by Innogrations in quantities and are provided for information purposes only. It can and do vary in different applications and related performance can vary over time. All parameters should be validated by customer’s technical experts for each application.

Innogrations products are not designed, intended or authorized for use as components in applications intended for surgical implant into the body or to support or sustain life, in applications in which the failure of the Innogrations product could result in personal injury or death or in applications for planning, construction, maintenance or direct operation of a nuclear facility.

For any concerns or questions related to terms or conditions, please check with Innogrations and authorized distributors

Copyright © by Innogrations (Suzhou) Co.,Ltd.